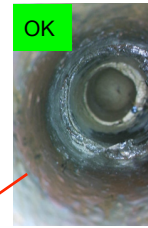
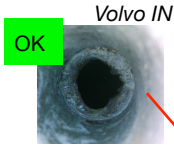




Deckwash pump in: some silicone, but OK, I think



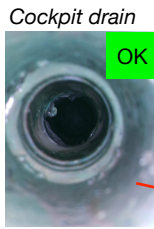
Toilet out



Volvo IN



Bathroom sink out



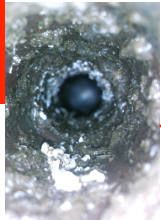
Cockpit drain



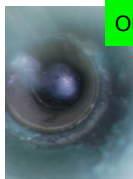
No mariscos, but very black dirt deep inside. Clean with water?

Kitchen sink out (dirty!)

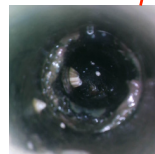
Clean with aqua forte (easy from strainer above)



Watermaker in

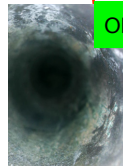


Generator in

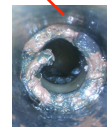


Aft deck drain

Clean with aqua forte

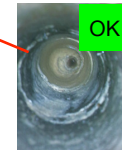


Aft bathroom sink

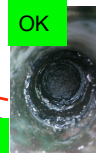


Aft deck drain

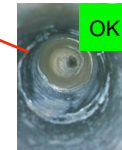
Silicone inside. Maybe cut with knife?



Generator out



Cockpit drain



Aft toilet out

True Design:  
1. 3/4" (1 in total)  
2. 1" (5 in total)  
3. 1 1/4" (8 in total)  
4. 2" (2 in total)



Regina Laska

Through hulls

